

DISTANCE BY ROAD

Sikar-27 KM • Jaipur-140 KM • New Delhi-300 KM • Ajmer-227 KM • Jodhpur-299 KM
Udaipur-456 KM • Hisar-200 KM • Agra-380 KM • Kota-399 KM

TRANSPORTATION

Buses are frequently available from main bus stand, Sindhi Camp, Jaipur for Jaipur-Bikaner route.
For schedule of trains, please visit: www.indianrail.gov.in.
Nearby Airports: Jaipur, New Delhi, Jodhpur and Udaipur.

+91 1573 225001 NH-11, Lakshmangarh, Sikar-Rajasthan, India www.modyuniversity.ac.in

TEAM CDC

Mr. Sudhanshu K. Sinha, GM-CDC

✉ gmcdd@modyuniversity.ac.in

☎ 8769508067

☎ +91 1573 225031 (D)

Mr. Himanshu Vyas, Manager-CDC

✉ manager.cdc@modyuniversity.ac.in

☎ 8005500585

☎ +91 1573 225001 (Ext.: 1102)

Mr. Biju Gopinath, Asst. Manager-CDC

✉ tpo@modyuniversity.ac.in

☎ 9928059050

☎ +91 1573 225001 (Ext.: 1101)

2019-20 **PLACEMENT
BROCHURE**

**#1 BEST WOMEN'S
UNIVERSITY
ASIA-PACIFIC**
- ASSOCHAM & THE EDUCATION POST - 2019





30 YEARS
OF EXCELLENCE IN
WOMEN'S EDUCATION




“ CHOOSE A JOB YOU LOVE, AND
YOU WILL NEVER HAVE TO WORK
A DAY IN YOUR LIFE. ”
- CONFUCIUS



Table of Contents

Accreditations & Recognitions	02
Awards & Rankings	03
Our Roots	04
From the Desk of General Manager CDC	05
About Mody university	06
Schools @ Mody Univerity & Student activities beyond classrooms	08
About CDC	10
Industry Specific Programmes / Electives	13
Entrepreneurship Development Cell (EDC)	14
Functions of EDC	15
Objectives of MU Incubator	16
Finishing School Concept	17
Our Placement Strategy	18
Global Connections	20
International Internships - 2017	21
International Internships - 2016	22
Recent International Projects	24
Placement Records	25
Summer and Final Recruiters	30
Alumni Association	32
Our Proud Alumni	34

ACCREDITATIONS & RECOGNITIONS

- ★ Mody University is among the seven University throughout India having ABET (Accreditation Board for Engineering and Technology) accredited program.
- | | |
|-------------------------------------------------------------------------------------------------------------------------------------------------------------------------------------------------|-----------------------------------------------------------------------------------------------------------------------------------------------------------------------------------|
| B.Tech (CSE)

ABET
<small>Computing & Engineering Accreditation Commissions</small> | B.Tech (ECE)

ABET
<small>Engineering Accreditation Commissions</small> |
|-------------------------------------------------------------------------------------------------------------------------------------------------------------------------------------------------|-----------------------------------------------------------------------------------------------------------------------------------------------------------------------------------|
- ★ Established by the Rajasthan State Legislature: Mody University, established by the Rajasthan State Legislature vide "The Mody University of Science and Technology, Lakshmangarh (Sikar) Act, 2013 (Act No. 29 of 2013)"
 - ★ University Grants Commission (UGC) Recognized: Mody University is covered under section 2(f) of the UGC Act, 1956 and is empowered to award degrees as specified by UGC under section 22 of the UGC Act, 1956. UGC-Proforma for submission of information by State Private Universities for ascertaining their norms and standards
 - ★ Approval by All India Council for Technical Education (AICTE): AICTE is a Statutory body under Ministry of HRD, Government of India, New Delhi for granting approval to conduct technical courses. All the courses offered by School of Engineering and Technology and School of Management Studies are duly approved by AICTE for the academic year 2015-16
 - ★ Approval by Bar Council of India (BCI): Programmes offered by School of Legal Studies are fully recognized by Bar Council of India (BCI), a statutory body of the Government of India created to regulate and represent the Indian Bar.
 - ★ Accreditation by National Board of Accreditation (NBA): National Board of Accreditation (NBA) has accredited our following programmes:
 - B.Tech. (Computer Science & Engineering)
 - B.Tech. (Electronics Communication & Engineering)
 - MBA
 - ★ Approval by Council of Architecture India - Bachelor of Architecture (B. Arch) Programmes offered by School of Architecture and Town Planning are fully recognized by Council of Architecture India (COA), a statutory body of the Government of India created to regulate and represent the Architecture profession.

AWARDS & RANKINGS

- ★ Award for "Best Women University in Asia Pacific" at Asia Pacific & Technology awards 2018
- ★ A++++ ranking for Business School and A++++for Engineering School by IIRF – 2017 Ranking
- ★ Outstanding Engineering College of Excellence by competition Success Review Ranking 2017
- ★ Top Best College for Placements and Infrastructure by Career Connect Ranking 2017
- ★ Best Education Brand 2017 – The Economic times
- ★ Best Private Women University of Asia 2016 by ASSOCHAM and The Education Post
- ★ India's Best B – Schools 2016 – 48th Rank by Career 360
- ★ Best Women University of the Year 2016 at 2nd National Education Summit and Awards 2017
- ★ Institutional Excellence Award 2016 by Society of Indian Law Firms and Menon Institute of Legal Advocacy Training
- ★ India's Best B-School 2016 by Outlook Best B – Schools 2016
- ★ University of the Year 2016 – Programme Efficacy by Higher Education Review
- ★ Mody School – 1 st in Rajasthan, 4 th in India among Top All Girl's Boarding Schools
- ★ One of the Top 33 Universities in Hall of Fame by India Today in 2015
- ★ MBA Programme rated as A8 by Indian Management in its B-School Survey in 2014
- ★ 2nd Best Women University of India by Career Connect in May, 2015 and 9 th among top private Universities in India
- ★ Among Top 150 B-Schools in India by Times B-School Survey in 2015
- ★ No. 1 MBA programme in India for Women by The Week in 2014
- ★ Top outstanding B-School of Excellence in India (17 th Rank) by CSR – GHRDC in November, 2016
- ★ One of the best and fastest growing educational institution of Asia by World Consulting and research Corporation (WCRC Leaders Asia, Singapore, May 2015)

OUR ROOTS



SHRI R. P. MODY
(HON'BLE CHAIRMAN)

Mody University of Science & Technology (commonly known as Mody University) was established in the year 1998 by Shri Rajendra Prasad Mody, an industrialist and philanthropist from the University town of Lakshmangarh in Rajasthan. It is Shri R. P. Mody's vision that has made the institute one of the foremost educational hubs for women in the country, with more than 10,000 women graduating from its various colleges since its inception. The University is built with the objective of nurturing excellence in every girl through an experienced faculty, world-class infrastructure at the campus which is set in a beautiful and secure environment.

FROM THE DESK OF GENERAL MANAGER CDC

“COMPANIES IN THE TOP-
QUARTILE FOR ETHNIC /
CULTURAL DIVERSITY ON
EXECUTIVE TEAMS WERE
33% MORE LIKELY TO
HAVE INDUSTRY-LEADING
PROFITABILITY.”

- DELIVERING THROUGH DIVERSITY,
MCKINSEY

It is a matter of great pride for me to address you as a potential recruiter and talent seeker from Mody University (MU) Lakshmangarh. Our constant endeavor to incorporate the best global academic practices into all our programmes and the ever expanding spectrum of our corporate associations have led Mody University (MU) Lakshmangarh from being counted as one of the best University in the country to an institute of global repute.

We all know that Diversity has become a top priority for recruitment and talent acquisition. Forbes Insights has identified workforce diversity and inclusion as a key driver of internal innovation and business growth.

The rise in diversity is related to the increasingly collaborative and team-based structure of modern organizations: the evidence is clear that companies that can effectively recruit and manage a diverse workforce have a clear competitive advantage.

To help corporate in meeting their diversity requirements, Mody University of Science & Technology is also committed to impart knowledge and develop skills in women to become professionals. Mody University (MU) Lakshmangarh has collaborated with top Indian and International universities to develop a multilateral network of learning. This promotes productive sharing of Intellectual capital through student and faculty exchange programs and co-designing the future of education.

We, at Mody University constantly work towards sustaining the mutually beneficial relationship.

Looking beyond placements, we also aim to engage with the corporate world through several non-recruitment avenues of association such as -The Corporate Talk Series, Guest Lectures, Live Projects, and Case-Study Competitions and so on.

I sincerely hope that the association between Mody University (MU) Lakshmangarh and your organization will be taken to greater heights in the current and forthcoming academic years.

I hereby extend a hearty welcome to you as one of the potential recruiters, it would be our proud privilege to host you, and we would be most delighted to be Involved In such a partnership.

We look forward to your visit to our campus soon.

GM - CDC

ABOUT MODY UNIVERSITY

Mody University was established in the year 2004 by Shri. R.P.Mody. He is a true visionary who took an idea ahead of his time and founded Mody University exclusively for Women. His philanthropic attributes, operated in terms of social and psychological promotion of the women community, led him to impart his proposed vision through practical infrastructure. The University instils the thought that is fully capable of orienting knowledge and information in a scientific manner in the minds of the common mass. This acts as a boon towards the development of a 21st century perspective of the knowledge acquisition process implemented within the university.

Adorned with a green 265 acre campus, Mody University is a cultural heritage where tradition and modernity perfectly blends. The university has an ambience enriched with culture and Indian values which inspires the students with modern outlook as well. The tranquil ambience of the Tapovan enhances learning here in Mody University. The students enjoy the peace that the campus brings in. Mody University puts strong efforts towards holistic, integrated development aimed at a drive to create, lead and hence excel. A commitment towards women development, Mody University has swathes of greenery, inspirational writings and plaques surrounding the campus which results in inculcation of spiritual values and imbibition of ancient wisdom.

The university ground is configured to promote education that strives to synthesize meaningfully state-of-the-art technological knowledge and skills with cultural values but with modern outlook.

VISION

To be an institute of professional learning comparable to the best in the world, with special commitment to women education and cultural heritage of India.

The university ground is configured to promote education that strives to synthesize meaningfully state-of-the-art technological knowledge and skills with cultural values but with modern outlook.

MISSION

Committed to excellence, the institute seeks to impart knowledge and develop skills in women to become professionals, well versed in modern technology and management practices while imbibing social sensitivity and environmental consciousness for the betterment of self and society.



SCHOOLS @ MODY UNIVERSITY

The University through its seven Schools offers a number of programmes. These Schools are as:

 | SCHOOL OF ENGINEERING AND TECHNOLOGY

 | SCHOOL OF MANAGEMENT STUDIES

 | SCHOOL OF FASHION AND DESIGN

 | SCHOOL OF PLANNING, ARCHITECTURE AND INTERIOR DESIGN

 | SCHOOL OF LEGAL STUDIES

 | SCHOOL OF SCIENCES

 | SCHOOL OF LIBERAL ARTS

STUDENT ACTIVITIES BEYOND CLASSROOMS

SPANDAN:

Symbolizes the rhythmic palpitation and a never-say-die attitude. Justifying the attitude and the zeal of students on the campus, the sports society of CASH opens up the door of classroom learning. It strives to fulfil the motto of the university which is determined to provide an overall education to its students. The society encourages the students to participate in various renowned state and national tournaments. It enables students to develop an interactive and sporty sphere around them, both on and off campus.

SARANG :

The cultural society of CASH which bears the responsibility of organizing inter and intra college cultural activities on and off campus throughout the year. A motivated team of elected students, the society ensures the vibrant ambience on campus by organizing annual cultural fest and extracurricular activities on monthly basis. True to its name, the society also provides a gateway for various multicultural activities on campus. The society also works like a catalyst to bind all the different communities, cultures, religions by celebrating all the festivals on the campus.

SANGLAP:

The academics student society of CASH is christened as Sanglap which stands for the art of creative and constructive thinking vis-a-vis dialectic method. It signifies the multiplicity of thoughts and the carefully constructed arguments. The society engages in organizing the conferences, symposiums, and guest lectures by the experts in the diverse areas. The society promotes interactive learning, collective thinking and infuses the culture of sharing of knowledge on the campus.

UTKARSH:

An organization of, for and by the Computer Science and IT students of CET, It provides a platform for budding technocrats to showcase their talent. It organizes several events like game programming, operating system quizzes, etc., and also conducts workshops on upcoming technologies in the IT sector.

BEACON:

A society by the students of Electronics and Communications, CET, BEACON stands for 'Batch of Engineers Acquiring Confidence Over Novelty'. It organizes events, activities, games, etc. to inculcate interest towards electronic gadgets, and conducts seminars and workshops to update students in this fast moving world spearheaded by relentless competition.

KARUNA:

A social service group of CET was established in 2006 with sole objective of supporting and driving positive changes within educational institutions/ organizations focusing on child education, and also community development. Its motto is "Changing the lives of underprivileged children through education".

ENGINIUM:

A reflection of excellence. Besides revealing the technical intellect of young minds, this annual magazine of CET also unveils their profound feelings about various spheres of life. Articles by prominent personalities about latest technical developments, creative cartoons by students and college graffiti are regular features. The magazine is a kaleidoscope of round the year campus activities.

ROBOTA:

A society of CET students established in 2009 provides a platform for the students to reveal their technical aptitude by organizing seminars, workshops, etc.

ANHATA:

A society of CET established in 2010 provides opportunity to the students to exhibit their flair for cultural activities.

XPERIA:

A society of CET for mathematical sciences, engineering technology, and personality development, was established in 2010. Its mission is to bring out the latent talent of students for the welfare of the society.

ATHLON:

A society of CET that intends developing and promoting the sports and athletics activities of students.

ABOUT CDC

Mody University has a centralized 'Career Development Centre' (CDC) - a team of Young, Energetic, Go-getter, and Goal Oriented Professionals. The department functions round the year to achieve the dreams and goals of budding professionals at the University. For the same, CDC leaves no stone unturned.

CDC works in close coordination with all the Schools of Mody University to guide students to choose the best Career option for them on the basis of their bent of mind, flair, dexterity, and qualification. It also assists students in identifying and developing their academic and career interests, and to set their short-term and long-term goals through individual counseling and group sessions.

To make students 'Industry Ready' and to expand the 'Repertoire of Skills', CDC managed to bag a number of 'Innovation Centres' for the University, in collaboration with industry giants like, Microsoft, Accenture, IBM, etc. Also, to move hand-in-hand with the pace of industry, MoUs have also been signed, in the area of 'Faculty Development Programme', 'Sabbatical Programme', 'Syllabus Restructuring and Upliftment', 'Online Education and Certifications', 'Multi-party Agreements', 'Specialized Trainings', 'Guest Lectures', 'Workshops', 'Placements', etc. with the major players like, Ericsson, Accenture, Microsoft, Infosys (under Campus Connect Programme), etc.

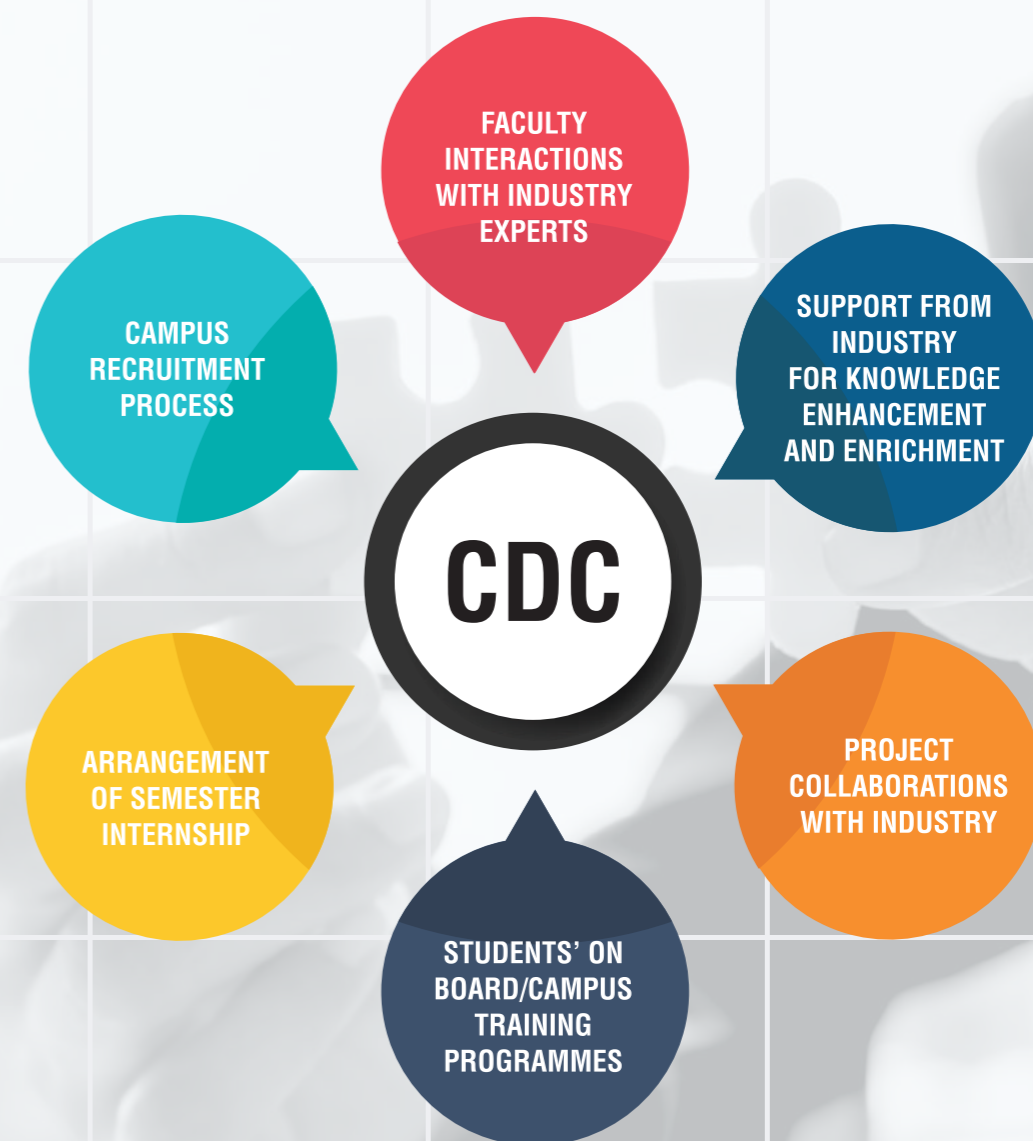
CDC runs 'Soft Skills' and 'Technical Skills' training

and assessment programmes with the help of its own in-house team and also with the help of third party agencies of national repute. The schedule of these classes are very smartly knit with the regular time table of various programmes, so that, students may assess and explore themselves during their course itself.

Apart from that, the seasoned and accomplished professionals from diverse fields visit the campus throughout the year to interact with students and share their industry experience. Regular Seminars, Conferences, Workshops, etc. are organized for more interactive, nuanced, and informative learning.

The positive result of the same is quite visible. Mody University enjoys stellar reputation among the leading companies which visit the campus every year to recruit our students. Some of the our regular and illustrious recruiters are Amazon, Hewlett Packard, Accenture, Oracle, Capgemini, Honeywell, L&T Technology, IBM, Infosys, Ericsson, Vodafone, Idea Cellular, India Bulls, Trident, XL Dynamics, Jaro Education, Tommy Hilfiger, Capital Via, Bonton Cables, Bank of Baroda, Axis Bank, IndusInd Bank, Tech Mahindra, etc. Apart from these, there a slew of companies which throng to our University. The exquisite placement record is an empirical testament to our academic brilliance, critical evaluation systems, and quality of students.

CDC STRIVES FOR EXCELLENCE THROUGH



“IT IS IMPORTANT TO FOLLOW YOUR DREAM AND HEART.
DO SOMETHING THAT EXCITES YOU.”

-SUNDER PICHAI

The CDC functions throughout the year towards expanding the institute's corporate reach and create an opportunity of placement and training for the students.

MoUs SIGNED WITH



PROMINENT INDUSTRY INITIATIVES

- ★ Infosys Campus Connect
- ★ Ericsson Empower Programme
- ★ Ericsson Course Elective
- ★ IBM Course Electives
- ★ Accenture Online Programme
- ★ Industry Electives
- ★ Industry Faculty Development Programmes
- ★ Students' Certification Programmes
- ★ Webinars and Online Education Programmes
- ★ IBM Joint Programmes



**YOUNG ENTREPRENEUR WILL MAKE A DIFFERENCE
IN THE INDIAN ECO SYSTEM.**



- RATAN TATA

INDUSTRY SPECIFIC PROGRAMMES / ELECTIVES

- ★ B. Tech. in Computer Science and Engineering with specialization in Big Data Analytics in association with IBM
- ★ B. Tech. in Computer Science and Engineering with specialization in IOT (Internet of Things) in association with IBM
- ★ B. Tech. in Computer Science and Engineering with specialization in Cloud Computing in association with IBM
- ★ B. Tech. in Computer Science and Engineering with specialization in Internet Security in association with IBM
- ★ Mobile Technology - Through Infosys, Campus Connect
- ★ Agile Technology - Through Infosys, Campus Connect
- ★ Advanced RAN – Through Ericsson
- ★ Infosys Campus Connect

INDUSTRY SPONSORED LABORATORIES



**IT'S A BEAUTIFUL THING WHEN A CAREER
AND A PASSION COME TOGETHER.**



-UNKNOWN

ENTREPRENEURSHIP DEVELOPMENT CELL (EDC)

The Entrepreneurship Development Cell of Mody University, has been established with the objective of creating, fostering and promoting the spirit of entrepreneurship among the young girls of the nation. We undertake various initiatives for the same. Some of them are, Start-up internship program, Webinars, Guest lectures, workshops and other games and competitions.

EDC aims at developing the spirit of entrepreneurship among the students of Mody University. It wants not only to ignite the minds but also to nurture the ideas of the most talented students of India. EDC is committed to build a

strong platform for the budding entrepreneurs. The vision is to guide the students to take entrepreneurship as a career, as a path to success, as a journey of wisdom.

The University provides infrastructure and technical support to the students having innovative ideas to transform into new products and services for the betterment of the society. The EDC also assists all the aspirants with mentoring, planning and execution of their start-up idea into a real business.

OBJECTIVES OF EDC

- To act as an institutional mechanism for providing various services including information to budding student entrepreneurs.
- To create Entrepreneurial culture in the Parent Institution and other institutions in the region and to promote the objectives of EDC, including programmes related to women and weaker sections of the society
- To foster better linkages between the Parent Institution, Industries and R&D institutions in the region and other related organizations engaged in promoting Small & Medium Enterprises (SMEs) including NGOs and other Voluntary Organisations.
- To catalyse and promote development of S&T based Enterprises and promote employment opportunities.
- To respond effectively to the emerging challenges and opportunities both at national and international level relating to SMEs and Micro Enterprises.

“ IF YOU DON'T BUILD YOUR DREAM,
SOMEONE WILL HIRE YOU TO HELP BUILD THEIRS. ”

-TONY GASKINS



FUNCTIONS OF EDC

- To organize Entrepreneurship Awareness Camps, Entrepreneurship Development Programmes and Faculty Development Programmes in the region for the benefit of students.
- To develop and introduce curriculum on Entrepreneurship Development at various levels including degree/diploma courses of the parent institution and other institutes in the region.
- To conduct research work and survey for identifying entrepreneurial opportunities.
- To guide and assist prospective entrepreneurs on various aspects such as preparing project reports, obtaining project approvals, loans and facilities from agencies of support systems and information on various technologies.
- To organize guest lectures, Seminars, etc. for promotion and growth of S&T based entrepreneurship.
- To arrange visits to industries for prospective entrepreneurs.
- To extend necessary guidance and escort services to the trainees in obtaining approval and execution of their projects.
- To act as a Regional Information Centre on business opportunities, processes, technologies, market, etc. by creating and maintaining relevant databases.
- To provide testing, calibration, quality assurance, design, tool room, pilot plant and other facilities for Entrepreneurs besides expertise in Intellectual Property rights, Patents search, etc.
- To conduct skill development training programmes leading to self/wage employment.



OBJECTIVE OF THE MU INCUBATOR

The main objective of setting up a MU Incubator is to develop, nurture, promote and successfully commercialise ventures - that are based on innovative products, models, tools, techniques, and technologies and render services in the above mentioned areas; ventures that would

conceptualise, develop and manufacture innovative processes, formats, mediums of communication for reaching out to individuals or masses - by providing training, mentoring, intellectual support services to the MU Incubatees and the requisite infrastructure.

FACILITIES & SUPPORT

The MU Incubator at MU - EDC is committed to the objective of supporting budding entrepreneurs in the entire process of their business formation i.e. right from the stage of conception to the stage of commercialisation. Once the idea is selected for incubation, the incubator will provide support in terms of conversion of the idea into a working model, research experimentation, lab testing, accreditations, market research, business plan, promotion, networking and so on, along with the continual guidance of highly respected mentors.

Along with this support, the MU Incubator will provide the following facilities to Incubatees:

- An Existing extensive network of academicians, professionals, entrepreneurs and organizations in and outside India.
- Basic office amenities like computing, telephony, postal services, meeting space etc
- Access to library resources including the huge collection of books, articles, journals, databases, videos, etc. in the online and offline library
- Other amenities like a canteen facility, auditorium, outdoor and recreational facilities, etc.

BENEFITS TO THE INCUBATEE

- The Incubatee will avail of all the above mentioned facilities along with:
- Technical, financial, infrastructural, physical and intellectual support to innovators to convert their ideas into products and services businesses.
- Support of technical human resources, as per the requirements.
- Intermediary services for commercial exchange of technologies between inventors / innovators and entrepreneurs

INCUBATION PROCEDURE

Interested candidates will be asked to fill up a detailed application form wherein they will have to mention their idea in brief along with a proposal and a tentative business plan. The Incubator will select the ideas and those applicants will be made to

undergo training in entrepreneurship. Once the training is over, Incubatees will commence the initial stages of their venture with the support and facilities provided by the MU Incubator.

FINISHING SCHOOL CONCEPT

The University firmly believes that its bright students chart their own career graph; CDC is just a facilitator acting as a bridge between top-notch companies and students.

To make students 'Industry Ready' and to expand the 'Repertoire of Skills', CDC managed to bag a

number of Industry Sponsored Laboratories for the University, in collaboration with industry giants. Also, to move hand-in-hand with the pace of industry, MoUs have also been signed in several areas with the major players of different domains.

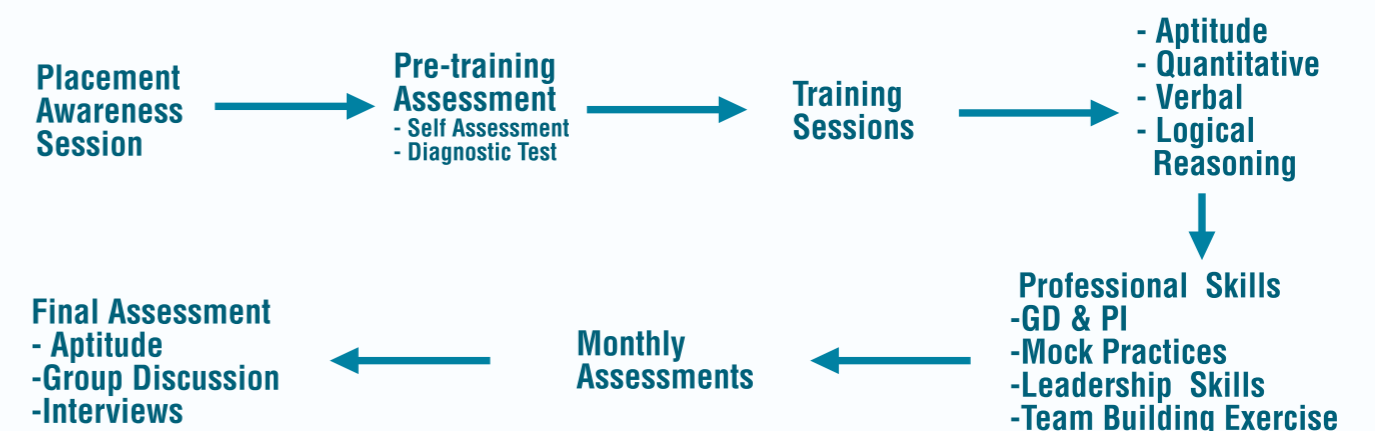
OUR METHODOLOGY

It is an intelligent combination of training, technology and fun in learning. We mould fresh graduates into priced assets who are ready to face any challenge head-on. We craft a student to be a winner forever and we call it Career Development Program.

OUR TRAINING MODULE EMPHASIZES ON

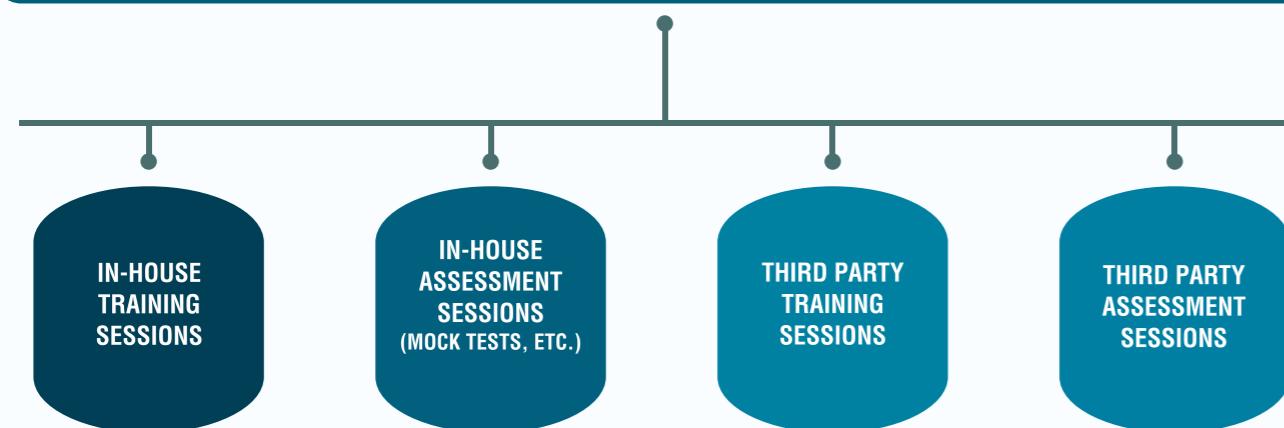


CAREER GUIDANCE AND TRAINING FLOW



OUR PLACEMENT STRATEGY

CDC STRATEGY



The In-house Training session starts from the second year of the programme and the classes are getting duly mentioned in regular time table of the course. With the tailor made course work, assessments being organized side by side, to know the acceptance level and preparation of the students. Third party training starts from 5th (Fifth) semester of the course and in 6th (sixth) semester Third Party Assessment Agencies do assessment of students on their platform as per their set standard. The outcome of the 3rd party assessments and In-house assessment is being shared with Third Party Training agency; so that, they may take necessary

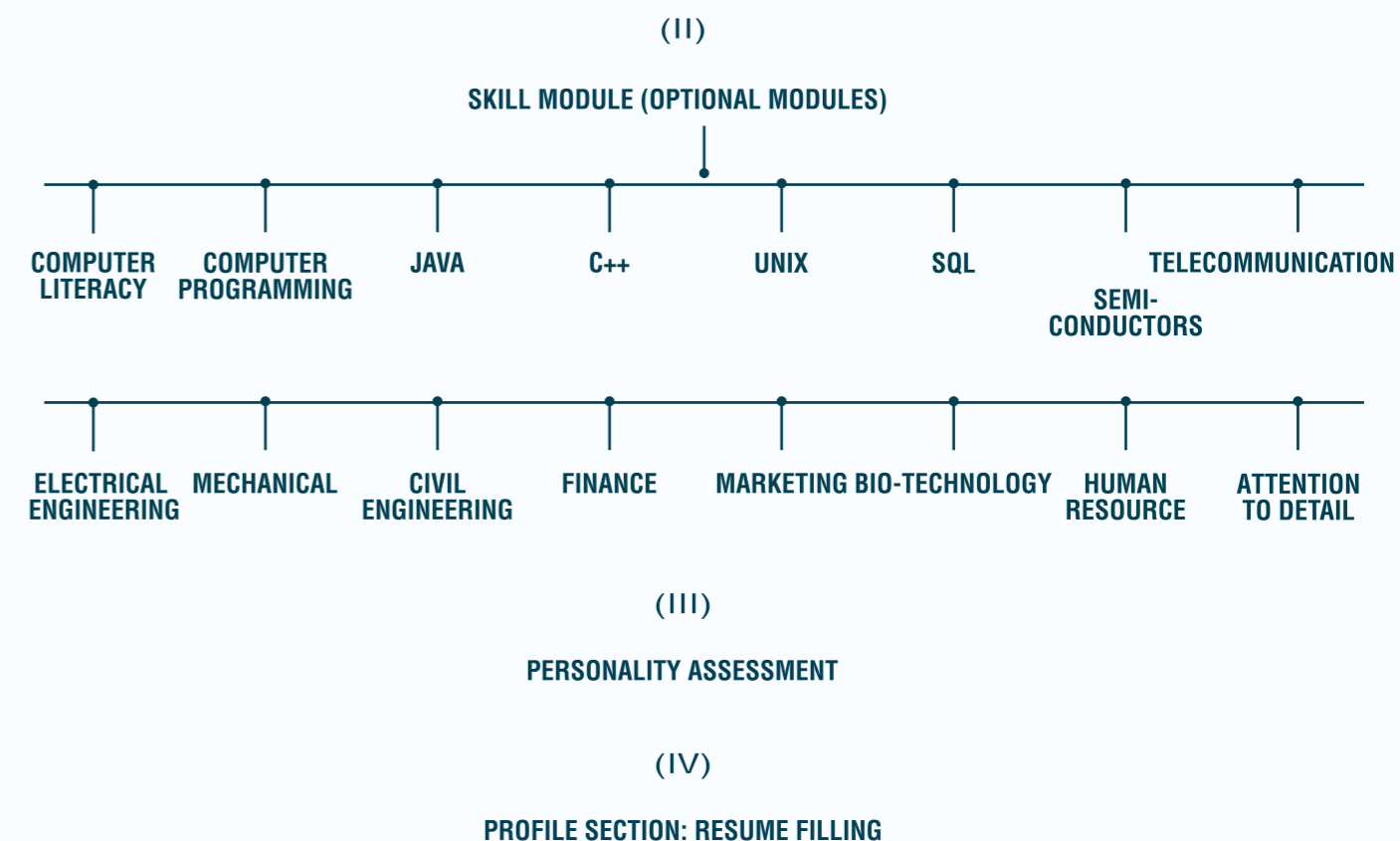
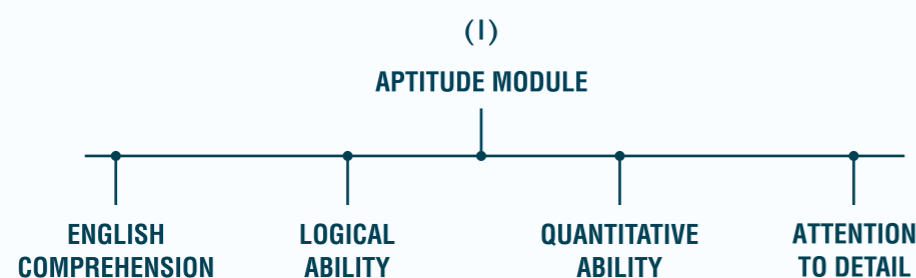
steps accordingly for the maximum benefit of students and to get the maximum selection conversions of students during the Campus Recruitment of various visiting companies. Again the same process gets repeated in 7th Semester with a brush-up End-to-End Training Session, which also includes Company Specific Training Sessions, where Mock Tests and Drives are taken by the Third party training agency, on the pattern of those companies which visit us on a regular basis. The Third Party Training Agency also conduct their own Mock Tests after the completion of each module and at the end of the syllabus in that semester.

The same pattern of In-house training is for all the schools associated with Mody University, where students get training of:

- a. Soft Skills
- b. Behavioural Skills
- c. GD / PI Trainings
- d. Motivational Training, and
- e. Career Counselling

Third Party Assessment Agencies Provide:

Assessment Tests Based on - **Aptitude**, **Skill** and **Personality Modules**.



FEEDBACK BY 3RD PARTY ASSESSMENT AGENCIES:

On the basis of Assessment Test, a detailed feedback and graphical guidance report is shared with the student. Using the feedback Report, the candidate gets to know why a particular company is shortlisting him and why a company from another sector is not. The candidate becomes aware of ways to improve her capabilities and improves her chance for shortlisting.

Features:

- a) National Comparison
- b) Sub-modular Grades
- c) How to improve in modules
- d) Test Time Management
- e) Study Schedule
- f) Job Match Analysis
- g) Personality Analysis

The Institute also gets an in-depth analysis of the college / Student performance based on the test. The report is highly useful for the management as a tool to further improve the educational system through the results shared in the report.

Main features include:

- 1. Institute's national percentiles - section wise.
- 2. Aggregated performance measurement of the college.
- 3. Skill gap analysis of campus and training suggestions
- 4. Bird eye view on student employability at large.
- 5. Sector suitability based on shortlisting criterion data of various companies.
- 6. Intra campus performance – stream-wise.
- 7. Perspective on students – Top performers & high potential students.

It's a set pattern for every year for the benefit of students and its result is visible and proved.

GLOBAL CONNECTIONS

“**DEVELOP A PASSION
FOR LEARNING.
IF YOU DO,
YOU WILL NEVER
CEASE TO GROW.**”

-ANTHONY J. D'ANGELO

To expand the global opportunities to women students, Mody University has established more than 20 international collaborations with renowned foreign universities-Universite de Nantes, (France), Ecole Des Mines de Nantes, (France), Stony Brook University (USA), University of Missouri (USA), University of North Texas (USA) and Florida International University (USA)-to name a few. Many of our students are regularly selected for paid internships and research fellowships by noted foreign institutes.

INTERNATIONAL UNIVERSITIES TIE-UPS



RESEARCH CENTRES



CERN, GENEVA, SWITZERLAND

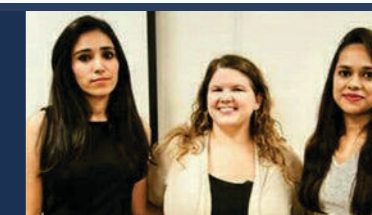


INTERNATIONAL INTERNSHIPS

USA



Khushboo Khandal, Charu Sharma, Rachna Pathak & Kajal Jain
UNIVERSITY/ INSTITUTION
Texas A&M University, George Bush Library and Museum, Disaster City, NASA Space Center, Sandia National Laboratories, National Museum of Nuclear Science and History, Oak Ridge National Laboratory, INMM, Georgia USA.
BRANCH
M. Tech. Nuclear Science & Technology



Kaushalya Bishnoi & Radhika Khandelwal
UNIVERSITY/ INSTITUTION
North Texas University, USA
BRANCH
B. Tech. CSE and B. Tech. EEE

FRANCE



Aanchal Agarwal, Sakshi Srivastava, Shradha Sharma & Ekta Yadav
UNIVERSITY/ INSTITUTION
Polytech Nantes, Universite de Nantes, France
BRANCH
B. Tech. ECE



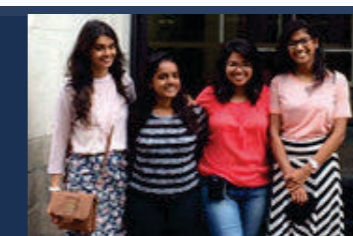
Keerti Gurjar
UNIVERSITY/ INSTITUTION
Polytech Nantes, Universite de Nantes, France
BRANCH
B. Tech. ME



Anukriti Srivastava
UNIVERSITY/ INSTITUTION
Polytech Nantes, Universite de Nantes, France
BRANCH
B. Tech. CSE



Rajshri Totla, Aratrika Guin, Purna Krishnatriya, Purwa Agarwal, Astha Bansal & Shavika Rastogi
UNIVERSITY/ INSTITUTION
Polytech Nantes, Universite de Nantes, France
BRANCH
B. Tech. ECE and B. Tech. CSE



Samridhi Nindrajog, Sakshi Goyal, Tanya Gupta & Sakshi Singhanla
UNIVERSITY/ INSTITUTION
HEI Lille
BRANCH
B. Tech. CSE, B. Tech. EEE and B. Com.



Tunisha Gupta & Tanushree Jain
UNIVERSITY/ INSTITUTION
Ecole Des Mines de Nantes, France
BRANCH
B. Tech. CSE

GERMANY



Vandana Sharma, Arunima Thapa & Nishita Singh Parmar
UNIVERSITY/ INSTITUTION
Karlsruhe Institute of Technology (KIT), Germany
BRANCH
B. Tech. CSE, B. Tech. ECE

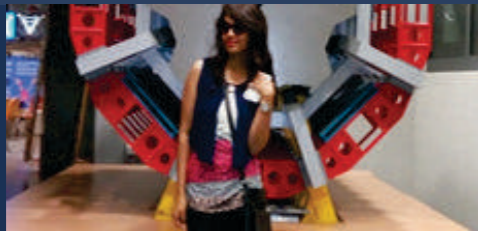


Jayati Vijaywargiya & Anushka Tibrewal
UNIVERSITY/ INSTITUTION
GSI, Germany
BRANCH
B. Tech. CSE



Charul Rathore
UNIVERSITY/ INSTITUTION
GSI, Germany
BRANCH
B. Tech. CSE

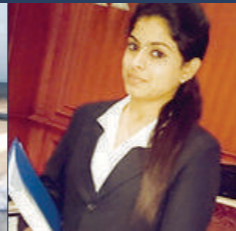
SWITZERLAND



Ayushi Jain
UNIVERSITY/ INSTITUTION
CERN, Switzerland
BRANCH
B. Tech. CSE



Bhavita Modi & Shivika Chhabra
UNIVERSITY/ INSTITUTION
CERN, Switzerland
BRANCH
B. Tech. ECE



“ FIND A GROUP OF PEOPLE WHO CHALLENGE ADD INSPIRE YOU, SPEND A LOT OF TIME WITH THEM AND IT WILL CHANGE YOUR LIFE ”

-AMY POEHLER

RECENT INTERNATIONAL PROJECTS

Indo-Argentina International Science and Technology Cooperation Joint Research: The joint research project between Dr. K. L. Ameta of SOS, Mody University and Prof. Adriana Neske of UNT Argentina, for the research on the medicinally important natural as well as synthesized heterocyclic systems is currently going on with active support from Ministry of Science, Technology and productive Innovation, Govt. of Argentina and Department of Science and Technology, Govt. India as a part of India-Argentina bilateral scientific and technological cooperation.

Indo-Bulgarian Inter-Governmental Programme of Cooperation in Science and Technology: is supported by Department of Biotechnology, New Delhi, India. The Principal Investigator Dr. R. K. Gaur (India Side) and Prof. Antony Stoev (Bulgaria side) are working to develop efficient techniques for controlling the Potyvirus diseases based on iRNAi and induction of host defence mechanisms against the viruses.

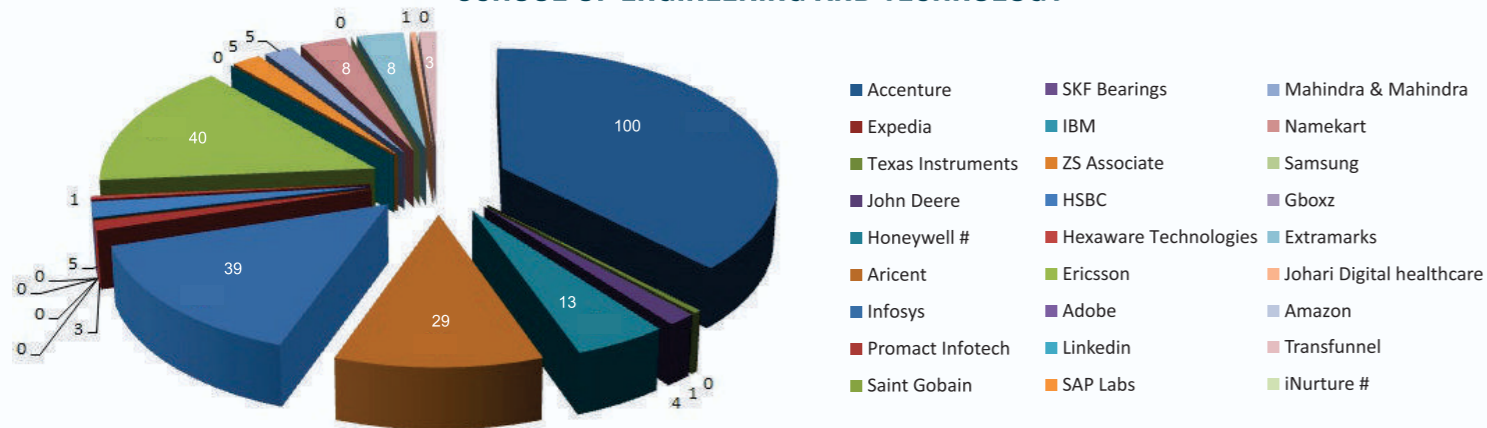
Dr. R. K. Gaur is a Fellow of the Royal Society of Biology, London.



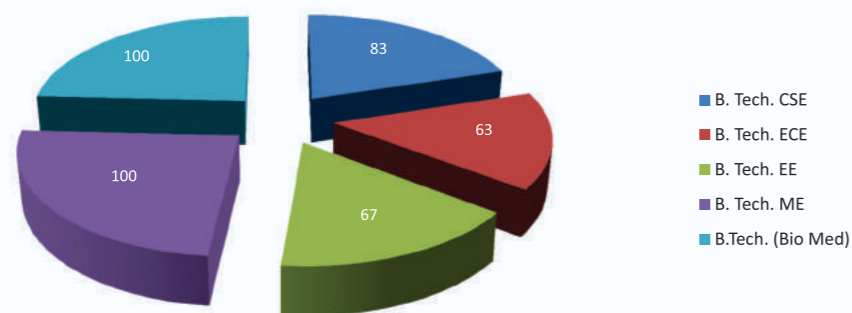
PLACEMENT RECORDS

MODY UNIVERSITY OF SCIENCE AND TECHNOLOGY PLACEMENT REPORT - 2018-19

SCHOOL OF ENGINEERING AND TECHNOLOGY

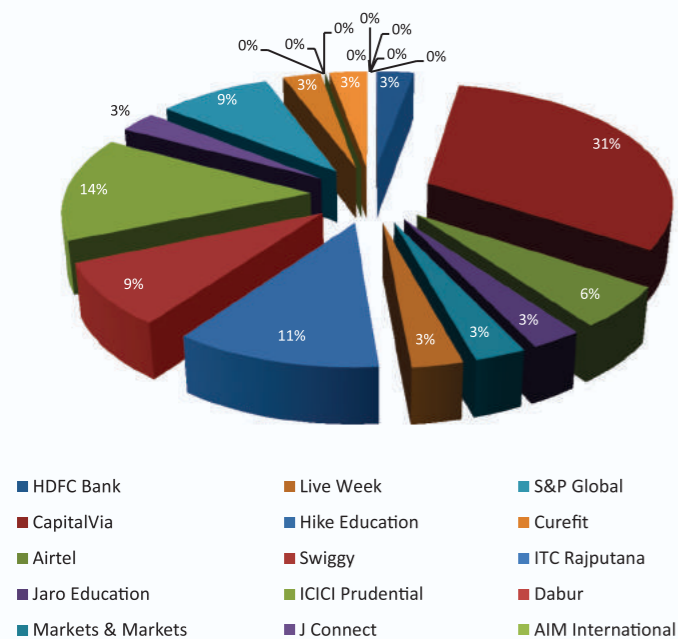


SCHOOL OF ENGINEERING AND TECHNOLOGY Programwise Selection Percentage

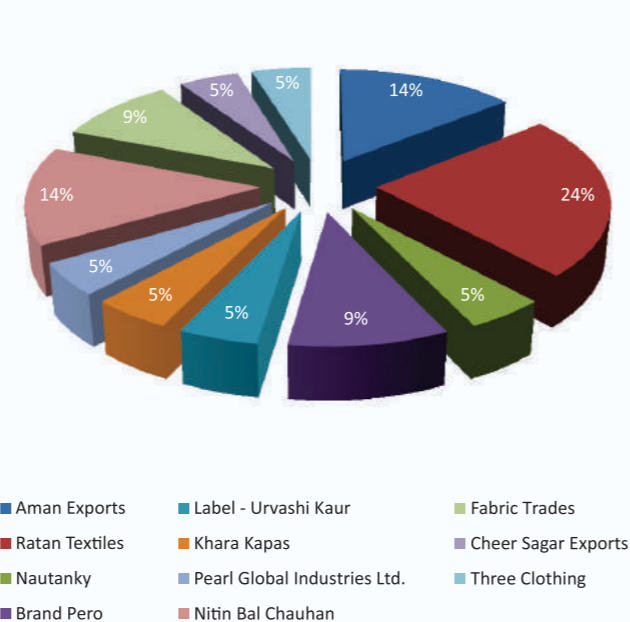


Highest Package Offered
International: **£56,000 (GBP 56K = Apx. 50 LPA)** Domestic: 12 LPA

SCHOOL OF MANAGEMENT STUDIES

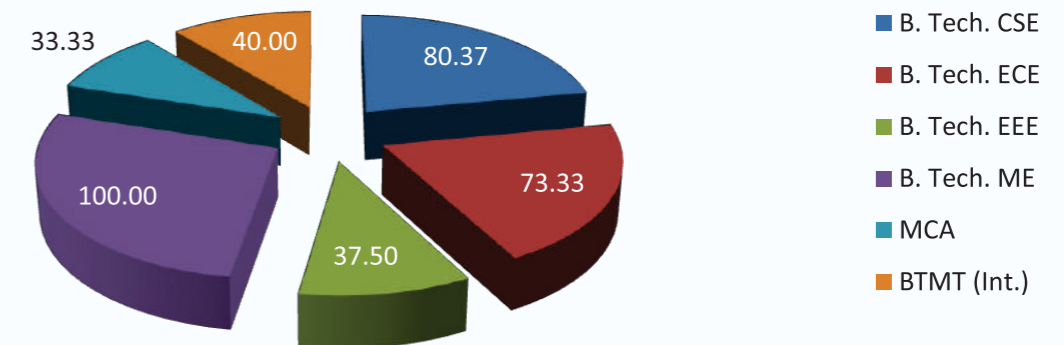


SCHOOL OF FASHION AND DESIGN

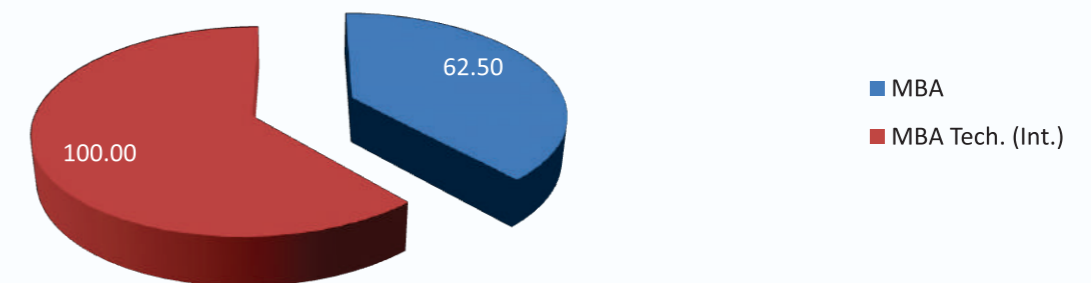


MODY UNIVERSITY OF SCIENCE AND TECHNOLOGY PLACEMENT REPORT - 2017-18

SCHOOL OF ENGINEERING AND TECHNOLOGY Branch - wise Placement Percentage

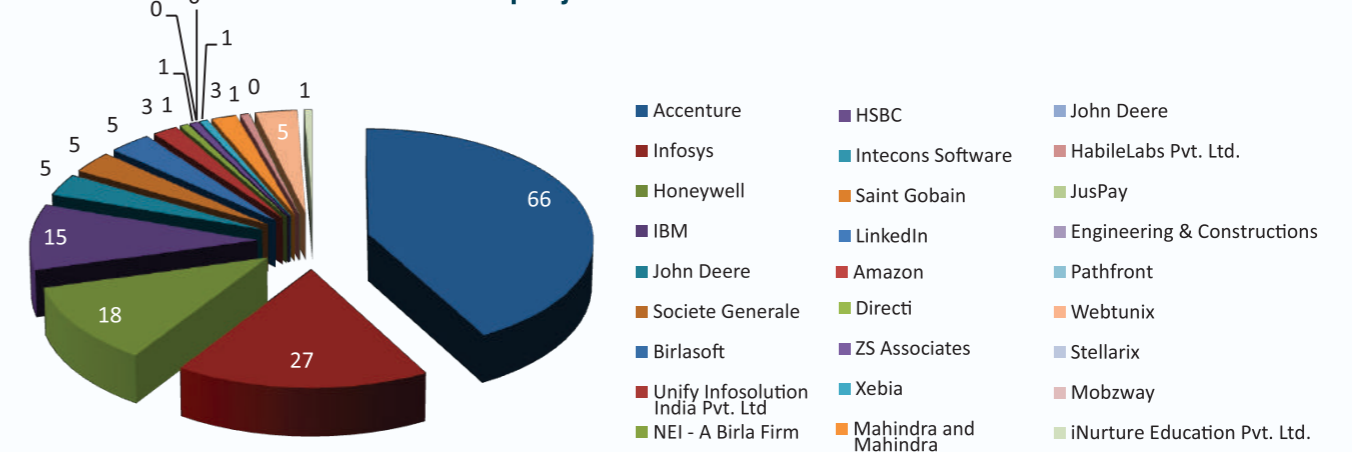


SCHOOL OF MANAGEMENT STUDIES Branch - wise Placement Percentage

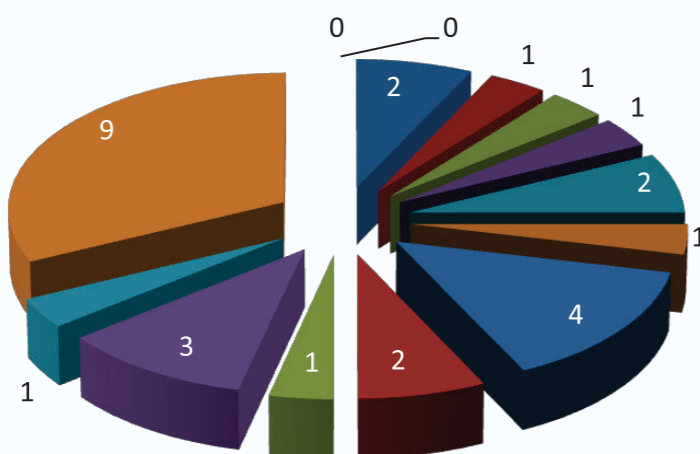


Highest Package Offered: Rs. **27 LPA**

SCHOOL OF ENGINEERING AND TECHNOLOGY Company-wise Selection of Students



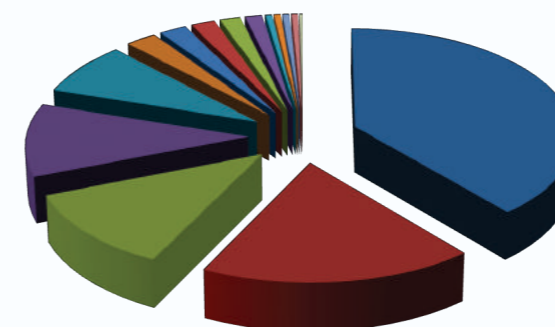
SCHOOL OF MANAGEMENT STUDIES Company-wise Selection of Students



- | | | |
|-------------------|------------------------|-------------------------------|
| Jaro Education | Ceasfire | ONS Recruiters |
| UAS International | AIM India Pvt. Ltd. | ACS Consulting |
| Infosys | ITC Rajputana | Vertical Recruiters Pvt. Ltd. |
| 99acres.Com | OYO Rooms | Convergys |
| ICICI Securities | HFFC | Talent4assure |
| Bajaj Allianz | FIS | Apollo Munich |
| Pride Hotels | BYJU's (Think & Learn) | My Operator |
| Cognus Technology | GKV | Research Panel |
| StudyMate | Credence | LifeCell |
| S&P Global | Praxis | Reliance Brands |
| Shiksha.Com | Teleperformance | Extra Marks |
| Infosys - BPO | Karvy | Abacus Consultancy |
| Naukri.com | Maven Workforce | Ernst and Young |
| MAN Trucks | PayTm | Bridgestone Tyres |

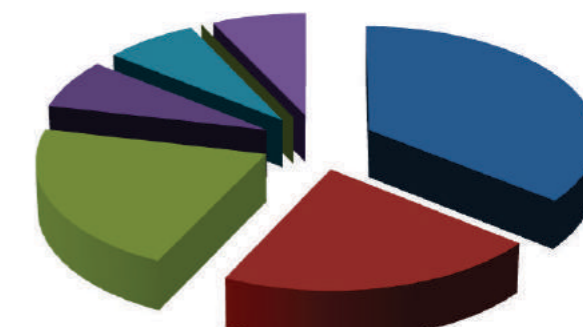
COMPANYWISE SELECTION

SCHOOL OF ENGINEERING AND TECHNOLOGY



- | | |
|------------------|----------------------|
| Accenture | Mahindra & Mahindra |
| Capegemini | SGL Infosolutions |
| Ericsson | Goldmine Real Estate |
| Infosys | Amazon |
| IBM | SKF Bearings |
| Honeywell | TCS (BCA) |
| Bhasin Group | SAP Labs |
| JSR Technologies | Appirio |
| Aayat Softech | HSBC Bank |
| John Deere | Bosch |
| Oracle | Reliance Jio |

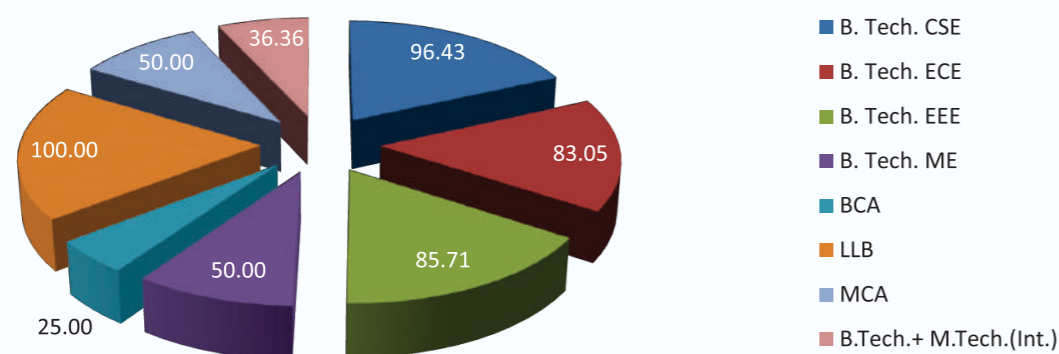
SCHOOL OF MANAGEMENT STUDIES



- | | |
|--------------------------|--------------------------------|
| SGL Infosolutions | Mist Avenue |
| Bhasin Group | Arc Consultancy |
| AU Small Finance Bank | Chegg |
| Jaro Education | Tynor India Pvt. Ltd. |
| Birla Sunlife | Poornima University |
| ICICI Securities | Incrementum Tech Sol. Pvt. Ltd |
| S & P Global | UAS International |
| Nestle | Amazon |
| Karvy Stock Broking Ltd. | HDFC Bank |
| Axis Bank | Conmed India |
| Decathlon.com | Pride Group of Hotels |

MODY UNIVERSITY OF SCIENCE AND TECHNOLOGY PLACEMENT REPORT - 2016-17

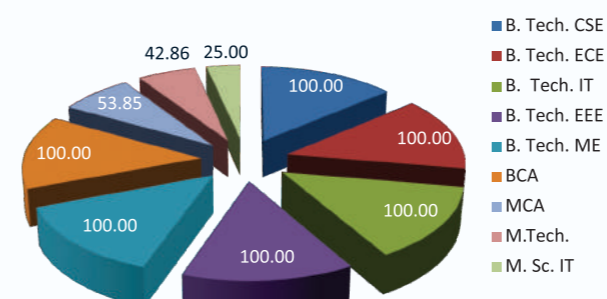
SCHOOL OF ENGINEERING AND TECHNOLOGY Branch-wise Selection Percentage



Highest Package Offered: Rs. 15 LPA

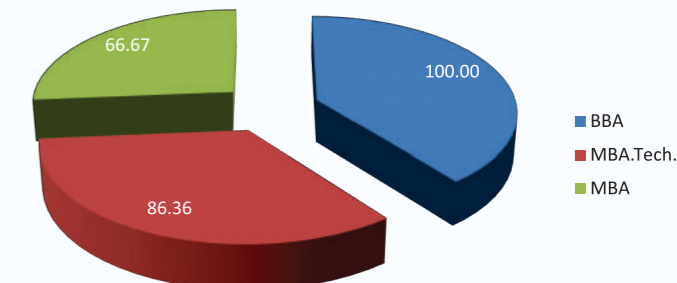
MODY UNIVERSITY OF SCIENCE AND TECHNOLOGY PLACEMENT REPORT - 2015-16

SCHOOL OF ENGINEERING AND TECHNOLOGY Branchwise Selection Percentage



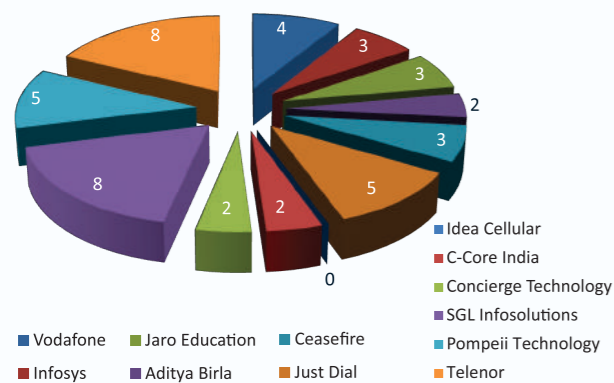
Highest Package Offered: Rs. 13 LPA

SCHOOL OF MANAGEMENT STUDIES Programwise Selection Percentage

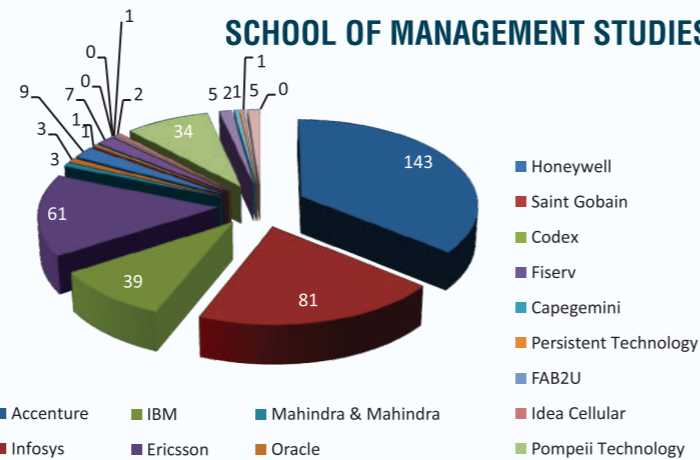


COMPANYWISE SELECTION

SCHOOL OF ENGINEERING AND TECHNOLOGY

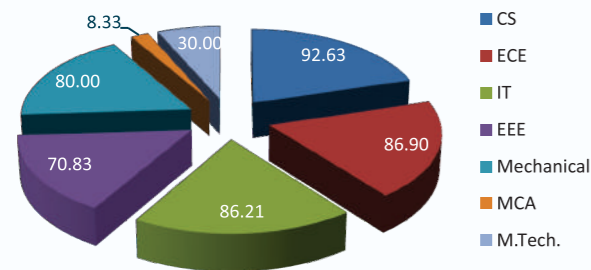


SCHOOL OF MANAGEMENT STUDIES



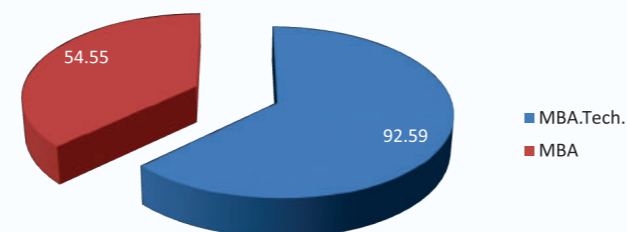
MODY UNIVERSITY OF SCIENCE AND TECHNOLOGY PLACEMENT REPORT - 2014-15

SCHOOL OF ENGINEERING AND TECHNOLOGY Branchwise Selection Percentage



Highest Package Offered: Rs. 18 LPA

SCHOOL OF MANAGEMENT STUDIES Programwise Selection Percentage



“ I'M A GREAT BELIEVER IN LUCK, AND I FIND
THE HARDER I WORK, THE MORE I HAVE OF IT. ”

-THOMAS JEFFERSON

SUMMER & FINAL RECRUITERS



SUMMER & FINAL RECRUITERS



ALUMNI ASSOCIATION

Alumni are the role models of any institution. At Mody University we believe in fostering a strong alumni network that not only helps former students remain connected but also provide an avenue for the philanthropic spirit of successful alumni. The Career Development Centre provides a platform for sharing intellectual, cultural, career and professional experiences not just with the present students but also with other alumni. Our goal in the CDC Office is to enable every student to remain connected with Mody University in order to promote stronger connections and help provide opportunities for dialogue, sharing knowledge, voluntary service, social interaction and philanthropy.

The Alumni of Mody University, a diverse assemblage of over 5000 engineers, scientists, lawyers, managers, bureaucrats, academicians and entrepreneurs, represent a very significant group of professionals, contributing effectively in their chosen areas of activity. The University firmly believes that every one of our alumnus

HIGHLIGHTS

- A Seamless Conduit between Industry and Institute
- Makes Students 'Industry Ready'
- Single window 'Nodal Point' for Career Counseling and Guidance
- A link between University, Students, Alumni and the Employers
- A team of Self-motivated and Goal Oriented Professionals
- Facilitates the Incubation of Ideas for Entrepreneurial Activities

plays a significant role in helping the University to reach its strategic mission, that of becoming one of the best learning centres of the world.

VISIT ALUMNI NETWORK PORTAL AT:

<http://alumni.modyuniversity.ac.in/>

“ NOBODY IS BOTHERED ABOUT AN INSTITUTION MORE THAN ITS ALUMNI. ”

- N.R. NARAYANA MURTHY

ALUMNI MEET

Our recent University level alumni meet for Mody University of Science and technology was held on 27th April 2019. The celebration provided a platform to alumni from various batches to renew friendships, network and learn about Mody University news since they left their alma mater. Nostalgia kept sweeping the environment.



“ **CONNECT TODAY...
TRANSFORM TOMORROW.
IT'S NOT JUST OUR MISSION,
IT'S OUR WISH FOR YOU.** ”

ALUMNI TESTIMONIALS



My View about Mody University: Its more than a decade , I entered the corridors of Mody with dreams of becoming an engineer. I am what I am all due to my Alma Mater....It not only nurtured dreams of a young engineer but also helped me carve a niche for myself in the society...

Richa Chakravarty
Batch: B.Tech 2005

Scientist/ Engineer 'SD', Space Applications Center (SAC)
Indian Space Research organization (ISRO), Ahmedabad

For me, Life in Mody University has been breath-taking and enriching. The environment not only helped me in imbibing knowledge but also in developing my overall personality, fuelling confidence in me. Mody University has achieved excellence in imparting high quality education with prime focus on holistic learning and inculcating competitive abilities in students which has helped me immensely.

My sincere thanks to all the Faculty members, mentors and everyone in Mody family for their support and altruism. They have played a very crucial role shaping me & proved me right, in selecting Mody over other Universities.

Business Development & Product Marketing Manager
St.Micro Electronics, San Fransico.

Astha Vijya
Batch: BE 2007



Right from the time I started researching colleges across the country during my high school studies, Mody University was among those I was targeting. The key points of Nirma that caught my attention were its reputation, position among the top Universities of the country and past experiences of some of my acquaintances who are its ex-students. It may not have been the first Institute I was wishing to attend, but after my journey with this University, I am proud to be a member of it.

Aruna Cheruvu
Batch: B.Tech 2008

KDB Engineer at Barclays
Greater Newyork.

Right from the time I started researching colleges across the country during my high school studies, Mody University was among those I was targeting. The key points of Nirma that caught my attention were its reputation, position among the top Universities of the country and past experiences of some of my acquaintances who are its ex-students. It may not have been the first Institute I was wishing to attend, but after my journey with this University, I am proud to be a member of it.

Astt. Prof Capitol technology University
Washington DC

Garima Bajwa
Batch: B.Tech 2009





I can positively say Mody University has made me a better person. It has helped me develop a positive attitude towards my studies and discover more about myself. Teachers are very caring and interested in students' well-being. They make sure every class is fun, educational and interactive.

Ajanta Mahato
Batch: B.Tech 2009

Program Manager at Microsoft
Greater Seattle.



My sincere appreciation & gratitude to the Training & Placement Department and all staffs of Mody University of Engineering & Technology for their efforts in imparting quality technical and aptitude training. I am very grateful to them for effectively and sincerely helping me to grab first ever opportunity that came into my life.

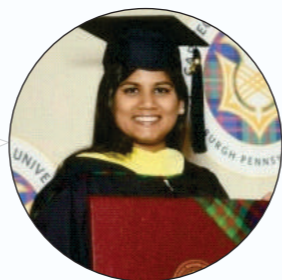
Saumya Jain
Batch: B.Tech 2012

Sr. Analyst
goldman Sachs USA

I feel great studying at Mody University and getting great opportunity as well as support from faculties & placement officers. It is dream come true, being an IT engineer and getting to work with such a networking company in the beginning of my career.

KDB Engineer at Barclays
Greater Newyork.

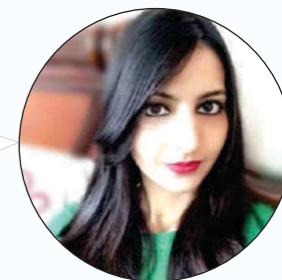
Monika Maheshwari
Batch: B.Tech 2010



I am very glad to share a positive journey of B.tech at Mody University. Here the atmosphere is full of motivation and innovation. All the faculties are enthusiastic and always ready to help. Because of blessings of parents and support of CDC & Training and Placement Cell I got an opportunity to apply and got selected in MNC named Accenture.

Senior Process Analyst
UBS Singapore

Sonal Bamal
Batch: B.Tech 2014



Mody University is the best university across the india and is known for its excellence . It has all the best facilities under one roof - state of infrastructure , erudite faculty , professional teachers , well stocked libraries , good computer labs , sports area , and studios with all requirements. I am very grateful to be a part of this university.

Ayushi Jangid
Batch: B.Tech 2011

KDB Engineer at Barclays
Greater Newyork.



Taking the Masters programme at Mody University has proven to be an incredible opportunity which has allowed me to grow on both a professional and personal level. The tutors are passionate about their chosen subjects and their enthusiasm is contagious in the classroom. I was encouraged to push my limits of good design and compile design research which is both relevant and innovative. I believe that the School of Design is ideal for creative individuals who are ready to work hard, take risks, and have fun.

Himali Pareek
Batch: MFM 2016-18

Asst. Designer
Ratan Textiles

I got placed in Insights pulp strategy communication it is because of the efforts put by our faculties and Training and Placement cell, which always make sure that students get placed in the best company in the market. Mody University provides a great exposure to students by organizing different activities which are very much helpful for every student for deciding their future field.

Senior Manager –Digital Strategy & insights
Pulp strategy Communication Pvt.Ltd.

Nupur Gupta
Batch: MBA 2012



Mody University is among the rarest of all in Rajasthan, to have a Woman's Football Team. Never have I imagined myself, struggling to juggle a ball, sweating hard to get the shoot right or simply put and playing football. I feel fortunate and proud to be a part of this legacy.

Whenever I feel drained and taken away by the hustle and bustle of life, the only place that soothes me is Tapovan. The serene environment, enchanting hymns and the peaceful aura could nowhere be found, except for this place.

Accenture

Mahima Tyagi
Batch: B.Tech 2014



OUR PROUD ALUMNI

Alumni are the role model of any institution. We believe in developing a strong alumni network that not only helps former students to remain connected but also provide an avenue for the philanthropic spirit of successful alumni. The Career Development Cell at Mody University provides a platform for sharing intellectual, cultural, career and professional experiences not just with the present students but with other alumni.



Ms. Purva Chadha
CSE - 2007
Manager, KPMG India,
Bangalore



Ms. Dr Juhi Ranjan
CSE - 2008
IIoT Researcher
RTI USA



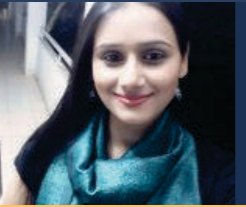
Ms. Rinky Choudhary
CSE - 2009
Senior IT Engineer,
Qualcomm, Munich,
Germany



Ms. Jyotsana Utsav
ECE - 2011
Lead Teradata developer,
Apple IncTexas USA



Ms. Sanjita Bisht
CSE - 2011
Sr Business Intelligence
Engineer , Phillips, Seattle
Washington



Capt. Aanchal
Shekhawat
ECE - 2012
OC Commn
Indian Army



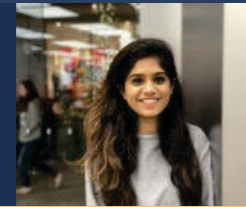
Ms. Dakshi Kumar
CSE - 2012
Software Engineer ,
eBay San Francisco



Ms. Lipika Sinha
ECE - 2012
Sr Analyst
Dell EMC Corp
New Delhi



Ms. Neha Sharma
M.Tech - 2012
VLSI Backend Design
Engineer,
Intel Corporation,
Bangalore



Ms. Saumya Jain
CSE - 2012
Sr Analyst
Goldman Sachs Intl
USA



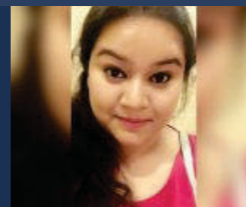
Ms. Sharmishtha Swaroop
CSE - 2012
Asst VP
Bank of America
Merrill Lynch,
Trenton, New Jersey



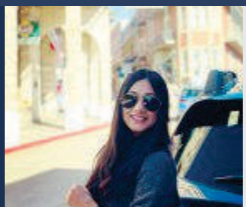
Ms. Shreya Shakya
ECE - 2012
Solution Specialist
Nokia Networks, Noida



Ms. Ramita Choudhary
ECE - 2013
Flight Lieutenant,
Indian Air Force



Ms. Shruti Sharan
EE - 2013
Senior Fraud Analyst,
American Express
Gurgaon



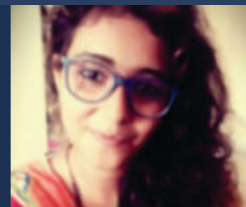
Ms. Dhaarna Singh
IT - 2014
Software QA Engineer,
Walmart, Bentonville,
Arkansas



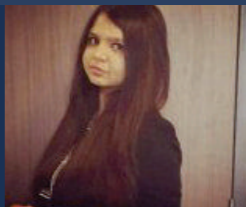
Ms. Divya Sardana
ECE - 2014
ASIC-Engineer,
Juniper Networks
Sunnyvale



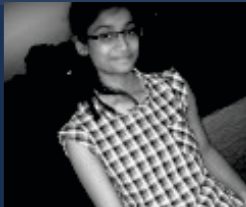
Ms. Emon Dutta
ECE - 2014
Associate Digital
Marketer,
TTK Services



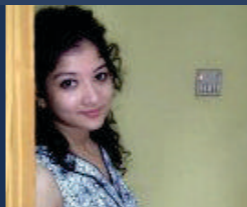
Ms. Priya Joshi
ECE - 2014
Fellow,
Teach for India



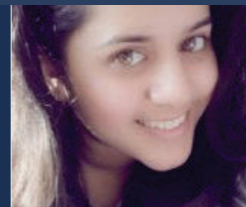
Ms. Aastha Sharma
CSE - 2015
Software Development
Associate,
TD Bank Totonto



Ms. Aditi Prabha
CSE - 2015
Software Development
Engineer
Amazon Hyderabad



Ms. Vanja Srivastava
CSE - 2015
R&D Engineer
Honeywell Aerospace
Bengaluru



Ms. Arpita Agnihotri
ECE - 2016
Digital Marketing
Specialist,
Google, Gurgaon



Ms. Nitya Kaushik
ECE - 2016
Associate Software
Engineer,
Accenture



Ms. Nishtha Bhatnagar
ECE - 2016
Masters, Iowa State
University

“ PEOPLE WITH GOALS SUCCEED BECAUSE
THEY KNOW WHERE THEY ARE GOING. ”

-EARL NIGHTINGALE